
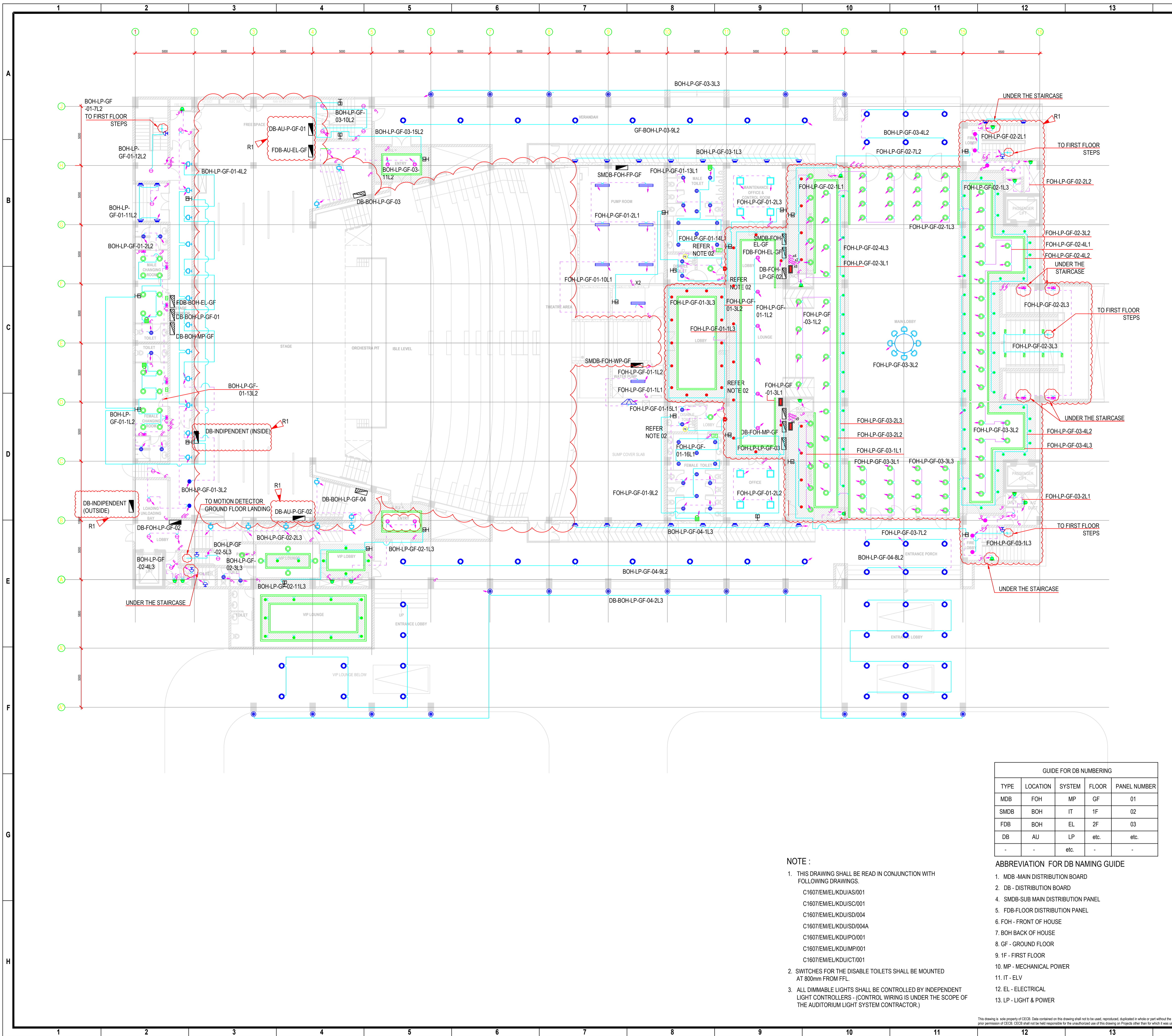


DRAWING LIST

ITEM NO.	DRAWING TITLE	DRAWING NO.	DATE	STATUS	REVISION NO.
00.	LIST OF DRAWINGS - LIGHTING	C1607/EM/ELKDU/DL-LD/001	25-11-2021	T	-
01.	LIGHTING LAYOUT - GROUND FLOOR (+0.005)	C1607/EM/EL/KDU/LD/001	25-11-2021	T	-
02.	LIGHTING LAYOUT - FIRST FLOOR (+4.050)	C1607/EM/EL/KDU/LD/002	25-11-2021	T	-
03.	LIGHTING LAYOUT - SECOND FLOOR (+8.050)	C1607/EM/EL/KDU/LD/003	25-11-2021	T	-
04.	LIGHTING LAYOUT - THIRD FLOOR (+12.050)	C1607/EM/EL/KDU/LD/004	25-11-2021	T	-
05.	LIGHTING LAYOUT - FOURTH FLOOR (+16.675)	C1607/EM/EL/KDU/LD/005	25-11-2021	T	-
06.	LIGHTING LAYOUT - FIFTH FLOOR (+20.675)	C1607/EM/EL/KDU/LD/006	25-11-2021	T	-

Rev	Date	Desd.	Description	Dwn.	CHK'd	App'd
Client	DEMOCRATIC SOCIALIST REPUBLIC OF SRI LANKA MINISTRY OF HEALTH					
Project	DESIGN, CONSULTANCY & SUPERVISION ON REMAINING CONSTRUCTION WORKS OF AUDITORIUM, KDU					
Drawing Title	LIST OF DRAWINGS -LIGHTING					
 CENTRAL ENGINEERING CONSULTANCY BUREAU Head Office, 415, Balaudhaloka Mawatha, Colombo 07. TEL : 011 2668 800 FAX : 011 2687 369 Project Office, UNIT - Electrical TEL : 0094-11-2668906 FAX : 0094-11-2668951 Email : agmenm@cecb.lk						
Designed	K.K.H.S.	Recommended	A-PM (ELECTRICAL)			
Checked	N.P.J.S.	Approved	A-AGM (ELECTRICAL)			
Drawn	W.A.P.A.S.	Scale: NTS	Date: 25-11-2021	Status	T	
Submitted	BASE/ELECTRICAL UNIT/ELECTRICAL DRAWING					
Sheet Size	Drawing No.				Rev. No.	
A3	C1607/EM/EL/KDU/DL-LD/001				-	

This drawing is sole property of CECB. Data contained on this drawing shall not to be used, reproduced, duplicated in whole or part without the prior permission of CECB. CECB shall not be held responsible for the unauthorized use of this drawing on Projects other than for which it was used.



LEGEND :

BOQ ITEM	DESCRIPTION	SYMBOL	HEIGHT TO BOTTOM FROM FFL (mm)
1.02	1200mm RECESSED MOUNTED LED DOWN LIGHT	☉	RECESSED
1.03	1200mm DIMMABLE RECESSED LED DOWN LIGHT (REFER NOTE 3.0)	☉	RECESSED
1.04	2000mm RECESSED MOUNTED LED DOWN LIGHT	☉	RECESSED
1.05	500mm SPOT LIGHT	●	SOFIT
1.06	700mm ADJUSTABLE SPOT LIGHT (DIMMABLE) - (REFER NOTE 3.0)	●	RECESSED
1.07	900mm SURFACE MOUNTED LED DOWN LIGHT	☉	SOFIT
1.08	1200mm SURFACE MOUNTED LED DOWN LIGHT	☉	SOFIT
1.09	1100mm SURFACE MOUNTED CYLINDRICAL LIGHT	☉	SOFIT
1.11	LAMP REPLACABLE DOUBLE BATTEN (1200mm) LIGHT FITTING	▬	2800
1.12	3000mm (600x600mm) RECESSED MOUNTED TYPE LED PANEL LIGHT	☐	SOFIT
1.14	WALL MOUNTED LIGHT (STAIRCASE)	☉	2300
1.15	INDOOR WALL MOUNTED BULKHEAD LIGHT	☉	2300
1.16	LAMP REPLACEABLE TYPE LED DUCT MOUNTED LIGHT	☉	2100
1.17	OUTDOOR DECORATIVE IN GROUND LIGHT	☉	
1.18	WALL RECESSED STEP LIGHT	☉	150
1.19	STAIRCASE STEP LIGHT	☉	TO BE FINALIZED AT SITE
1.20	700mm LED STRIP LIGHT	▬	SOFIT
1.21	EMERGENCY LIGHT	☉	2300
1.22	LED FLOOD LIGHT (IP 54)	☉	
1.24	STROB LIGHT (DISABLE ALARM)	☉	2300
1.25	MOTION DETECTOR	☉	TO BE FINALIZED AT SITE
1.26	PRESENCE DETECTOR	☉	TO BE FINALIZED AT SITE
-	CHANDELIER LIGHT FITTING	☉	TO BE FINALIZED AT SITE
-	LIGHT POINT	☉	TO BE FINALIZED AT SITE
-	PUSH BUTTON (DISABLE ALARM)	☉	800
-	DIPOLE SWITCH (FOR PRESENCE DETECTOR)	☉	1400
-	LIGHT CONTROLLER - (REFER NOTE 3.0)	☉	1400
-	1 WAY 1 GANG SWITCH	☉	1400
-	1 WAY 2 GANG SWITCH	☉	1400
-	1 WAY 3 GANG SWITCH	☉	1400
-	1 WAY 4 GANG SWITCH	☉	1400
-	1 WAY 5 GANG SWITCH	☉	1400
-	2 WAY 1 GANG SWITCH	☉	1400
-	2 WAY 2 GANG SWITCH	☉	1400
-	2 WAY 1 GANG SWITCH (FOR MOTION DETECTOR)	☉	1800
-	SURFACE MOUNTED/ FLOOR STANDING DISTRIBUTION BOARD	☉	2100 (TOP)
-	RECESSED MOUNTED DISTRIBUTION BOARD	☉	2100 (TOP)
-	SAME SWITCH SAME CIRCUIT	☉	-
-	SEPARATE SWITCH SAME CIRCUIT	☉	-

GUIDE FOR DB NUMBERING

TYPE	LOCATION	SYSTEM	FLOOR	PANEL NUMBER
MDB	FOH	MP	GF	01
SMDB	BOH	IT	1F	02
FDB	BOH	EL	2F	03
DB	AU	LP	etc.	etc.
-	-	etc.	-	-

- NOTE :**
- THIS DRAWING SHALL BE READ IN CONJUNCTION WITH FOLLOWING DRAWINGS.
 - C1607/EM/EL/KDU/AS/001
 - C1607/EM/EL/KDU/SC/001
 - C1607/EM/EL/KDU/SD/004
 - C1607/EM/EL/KDU/SD/004A
 - C1607/EM/EL/KDU/PO/001
 - C1607/EM/EL/KDU/MP/001
 - C1607/EM/EL/KDU/CT/001
 - SWITCHES FOR THE DISABLE TOILETS SHALL BE MOUNTED AT 800mm FROM FFL.
 - ALL DIMMABLE LIGHTS SHALL BE CONTROLLED BY INDEPENDENT LIGHT CONTROLLERS - (CONTROL WIRING IS UNDER THE SCOPE OF THE AUDITORIUM LIGHT SYSTEM CONTRACTOR).

- ABBREVIATION FOR DB NAMING GUIDE**
- MDB - MAIN DISTRIBUTION BOARD
 - DB - DISTRIBUTION BOARD
 - SMDB - SUB MAIN DISTRIBUTION PANEL
 - FDB - FLOOR DISTRIBUTION BOARD
 - FOH - FRONT OF HOUSE
 - BOH - BACK OF HOUSE
 - GF - GROUND FLOOR
 - 1F - FIRST FLOOR
 - MP - MECHANICAL POWER
 - IT - ELECTRICAL
 - EL - ELECTRICAL
 - LP - LIGHT & POWER

Rev	Date	Desd.	Description	Drn.	Chk'd	App'd

Client: DEMOCRATIC SOCIALIST REPUBLIC OF SRI LANKA
MINISTRY OF HEALTH

Project: DESIGN, CONSULTANCY & SUPERVISION ON REMAINING CONSTRUCTION WORKS OF AUDITORIUM, KDU

Drawing Title: LIGHTING LAYOUT - GROUND FLOOR (+0.050)

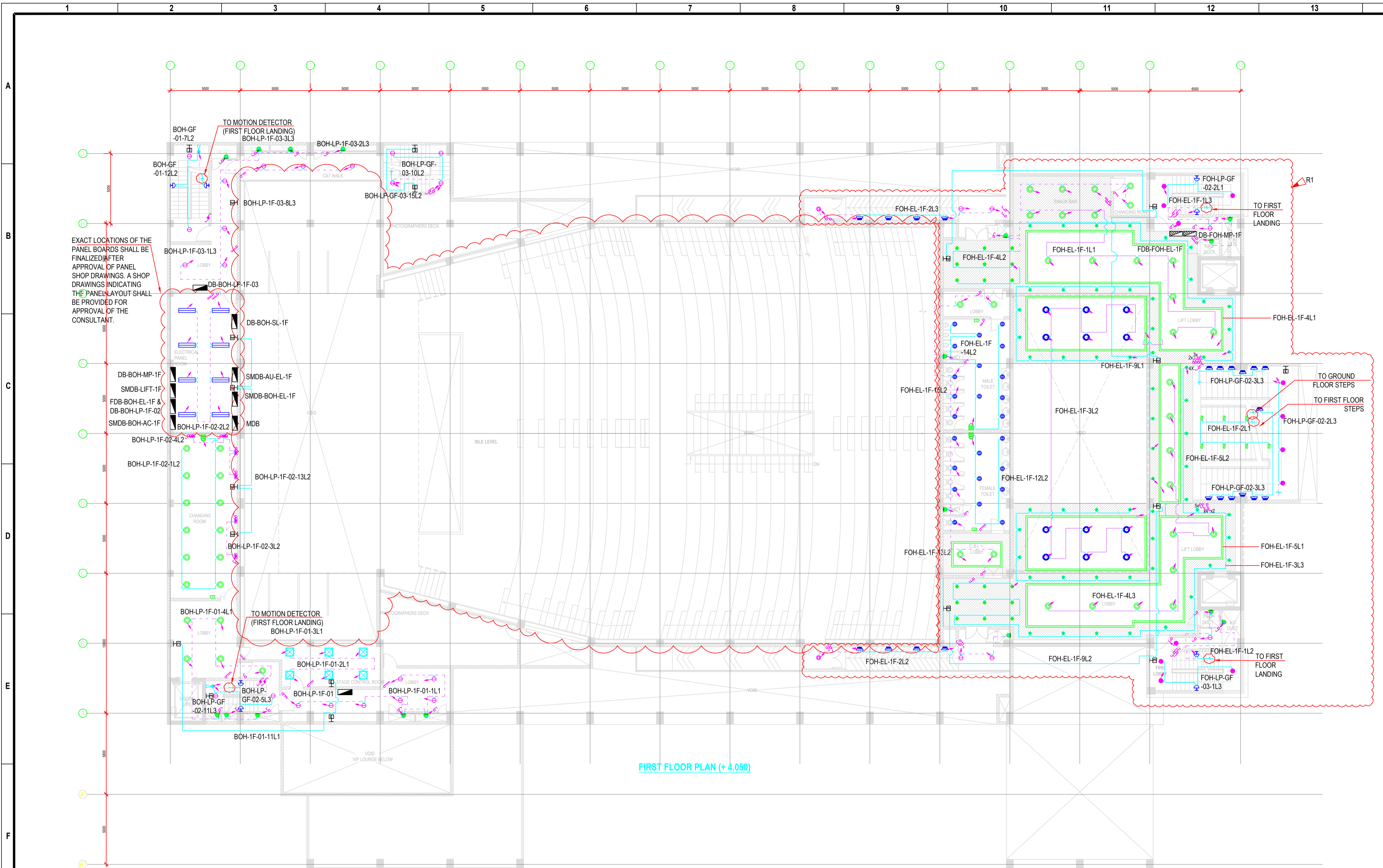
cecb CENTRAL ENGINEERING CONSULTANCY BUREAU

Head Office, 415, Bandhaloka Mawatha, Colombo 07.
TEL : 011 2668 800
FAX : 011 2687 369

Project Office, UNIT - Electrical
TEL : 0094-11-2668806
FAX : 0094-11-2668951
Email : agmenm@cecb.lk

Designed	K.K.H.S.	Recommended	A-PM(ELECTRICAL)
Checked	N.P.J.S.	Approved	A-AGM (ELECTRICAL)
Drawn	P.K.L.S.	Scale: NTS	Date: 25-11-2021
Checked		BASELECTRICAL UNITELECTRICAL DRAWINGS	Status
Submitted			T
Sheet Size	Drawing No.		Rev. No.
A1	C1607/EM/EL/KDU/LD/001		-

This drawing is the property of CECB. Data contained on this drawing shall not be used, reproduced, duplicated in whole or part without the prior permission of CECB. CECB shall not be held responsible for the unauthorised use of this drawing or Project other than for which it was used.



FIRST FLOOR PLAN (+ 4.050)

LEGEND :

BOQ ITEM	DESCRIPTION	SYMBOL	HEIGHT TO BOTTOM FROM FFL (mm)
1.01	900mm RECESSED MOUNTED LED DOWN LIGHT	⊙	RECESSED
1.02	1200mm RECESSED MOUNTED LED DOWN LIGHT	⊙	RECESSED
1.03	1200mm DIMMABLE RECESSED LED DOWN LIGHT	⊙	RECESSED
1.05	500mm SPOT LIGHT	●	SOFIT
1.08	1200mm SURFACE MOUNTED LED DOWN LIGHT	⊙	SOFIT
1.09	1100mm SURFACE MOUNTED CYLINDRICAL LIGHT	⊙	SOFIT
1.11	LAMP REPLACABLE DOUBLE BATTEN (1200mm) LIGHT FITTING	▬	2800
1.13	3000mm, (600X600mm) SURFACE MOUNTED TYPE LED PANEL LIGHT	⊠	SOFIT
1.14	WALL MOUNTED LIGHT (STAIRCASE)	⊥	2300
1.16	LAMP REPLACABLE TYPE LED DUCT MOUNTED LIGHT	⊥	2100
1.18	WALL RECESSED STEP LIGHT	⊥	150
1.19	STAIRCASE STEP LIGHT	⊥	TO BE FINALIZED AT SITE
1.20	700mm LED STRIP LIGHT	▬	SOFIT
1.21	EMERGENCY LIGHT	⊥	2300
1.25	MOTION DETECTOR	⊙	TO BE FINALIZED AT SITE
-	LIGHT POINT	⊙	TO BE FINALIZED AT SITE
-	DIPOLE SWITCH (FOR PRESENCE DETECTOR)	⊥	1400
-	1 WAY 1 GANG SWITCH	⊥	1400
-	1 WAY 2 GANG SWITCH	⊥	1400
-	1 WAY 3 GANG SWITCH	⊥	1400
-	1 WAY 4 GANG SWITCH	⊥	1400
-	1 WAY 5 GANG SWITCH	⊥	1400
-	2 WAY 1 GANG SWITCH	⊥	1400
-	2 WAY 2 GANG SWITCH	⊥	1400
-	2 WAY 1 GANG SWITCH (FOR MOTION DETECTOR)	⊥	1800
-	SURFACE MOUNTED/ FLOOR STANDING DISTRIBUTION BOARD	⊥	2100 (TOP)
-	RECESSED MOUNTED DISTRIBUTION BOARD	⊥	2100 (TOP)
-	SAME SWITCH SAME CIRCUIT	---	-
-	SEPARATE SWITCH SAME CIRCUIT	---	-

NOTE :

- THIS DRAWING SHALL BE READ IN CONJUNCTION WITH FOLLOWING DRAWINGS.
 C1607/EM/EL/KDU/AS/002
 C1607/EM/EL/KDU/SC/001
 C1607/EM/EL/KDU/SD/005
 C1607/EM/EL/KDU/PO/002
 C1607/EM/EL/KDU/MP/002
 C1607/EM/EL/KDU/CT/002

GUIDE FOR DB NUMBERING

TYPE	LOCATION	SYSTEM	FLOOR	PANEL NUMBER
MDB	FOH	MP	GF	01
SMDB	BOH	IT	1F	02
FDB	BOH	EL	2F	03
DB	AU	LP	etc.	etc.
-	-	etc.	-	-

ABBREVIATION FOR DB NAMING GUIDE

- MDB - MAIN DISTRIBUTION BOARD
- DB - DISTRIBUTION BOARD
- SMDB - SUB MAIN DISTRIBUTION BOARD
- FDB - FLOOR DISTRIBUTION BOARD
- FOH - FRONT OF HOUSE
- BOH - BACK OF HOUSE
- GF - GROUND FLOOR
- 1F - FIRST FLOOR
- MP - MECHANICAL POWER
- IT - ELV
- EL - ELECTRICAL
- LP - LIGHT & POWER

Rev	Date	Desd.	Description	Drawn	Chk'd	App'd

Client: DEMOCRATIC SOCIALIST REPUBLIC OF SRI LANKA
MINISTRY OF HEALTH

Project: DESIGN, CONSULTANCY & SUPERVISION ON REMAINING CONSTRUCTION WORKS OF AUDITORIUM, KDU

Drawing Title: LIGHTING LAYOUT - FIRST FLOOR (+4.050)

cecb CENTRAL ENGINEERING CONSULTANCY BUREAU

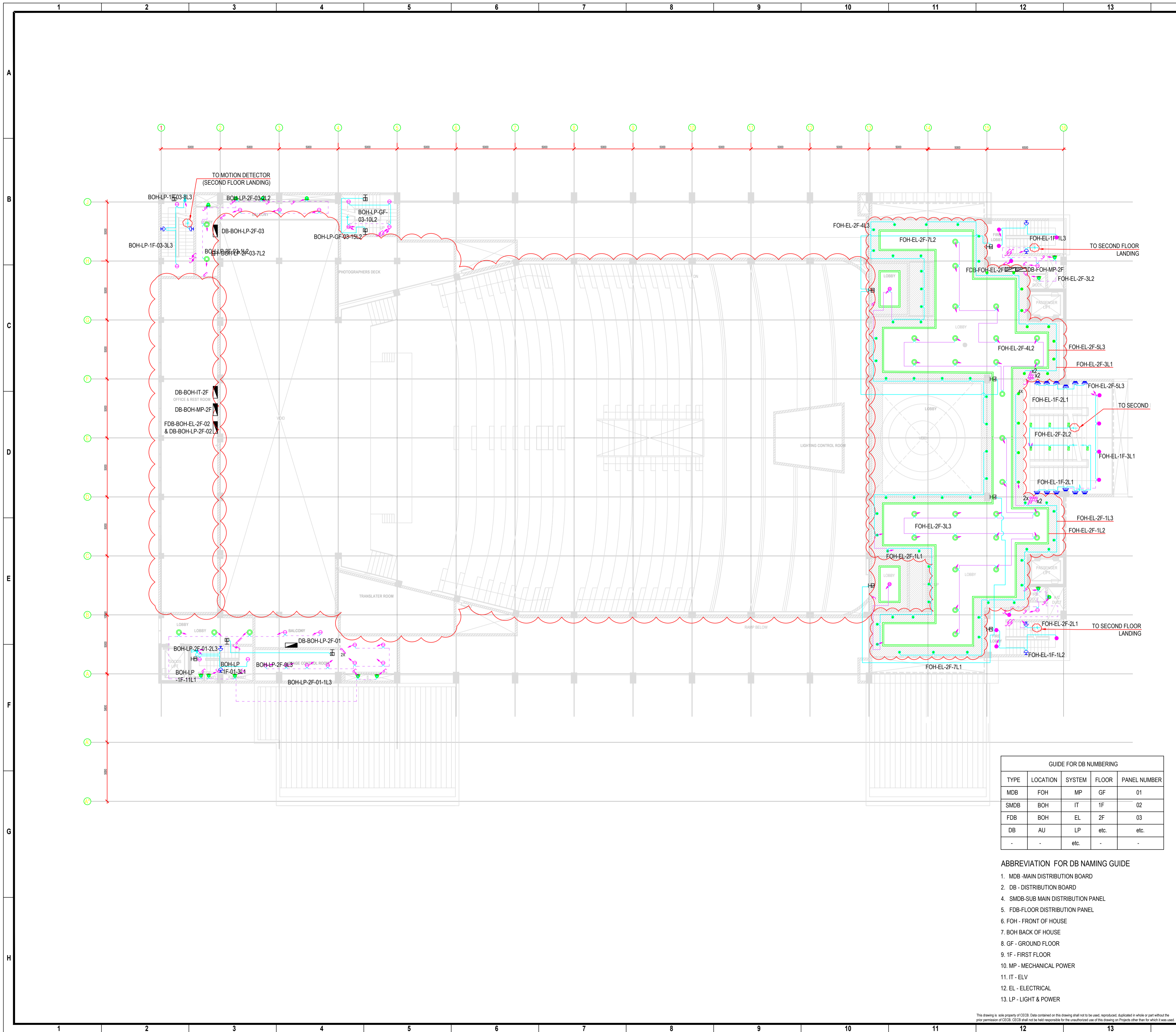
Head Office, 415, Bauddhaloka Mawatha, Colombo 07
 TEL : 011 2668 800
 FAX : 011 2687 369

Project Office, UNIT - Electrical
 TEL : 0094-11-2668806
 FAX : 0094-11-2668951
 Email : agmenm@cecb.lk

Designed	K.K.H.S.	Recommended	A-PM(ELECTRICAL)
Checked	N.P.J.S.	Approved	A-AGM (ELECTRICAL)
Drawn	P.K.L.S.	Scale: NTS	Date: 25-11-2021
Checked		Status	T
Submitted		BASE ELECTRICAL UNTELETYPE DRAWINGS	

Sheet Size: A1 Drawing No.: C1607/EM/EL/KDU/LD/002 Rev. No.: -

This drawing is the property of CECB. Data contained on this drawing shall not be used, reproduced, duplicated in whole or part without the prior permission of CECB. CECB shall not be held responsible for the unauthorized use of this drawing on projects other than for which it was used.



LEGEND :

BOQ ITEM	DESCRIPTION	SYMBOL	HEIGHT TO BOTTOM FROM FFL (mm)
1.02	1200mm RECESSED MOUNTED LED DOWN LIGHT	⊙	RECESSED
1.03	1200mm DIMMABLE RECESSED LED DOWN LIGHT (REFER NOTE 3.0)	⊙	RECESSED
1.05	500mm SPOT LIGHT	●	SOFIT
1.08	1200mm SURFACE MOUNTED LED DOWN LIGHT	⊖	SOFIT
1.09	1100mm SURFACE MOUNTED CYLINDRICAL LIGHT	●	SOFIT
1.14	WALL MOUNTED LIGHT (STAIRCASE)	⊕	2300
1.16	LAMP REPLACEABLE TYPE LED DUCT MOUNTED LIGHT	⊖	2100
1.18	WALL RECESSED STEP LIGHT	⊖	150
1.19	STAIRCASE STEP LIGHT	⊖	TO BE FINALIZED AT SITE
1.20	700mm LED STRIP LIGHT	—	SOFIT
1.21	EMERGENCY LIGHT	⊕	2300
1.25	MOTION DETECTOR	⊕	TO BE FINALIZED AT SITE
-	1 WAY 1 GANG SWITCH	⊕	1400
-	1 WAY 2 GANG SWITCH	⊕	1400
-	1 WAY 3 GANG SWITCH	⊕	1400
-	1 WAY 4 GANG SWITCH	⊕	1400
-	1 WAY 5 GANG SWITCH	⊕	1400
-	2 WAY 1 GANG SWITCH	⊕	1400
-	2 WAY 2 GANG SWITCH	⊕	1400
-	2 WAY 1 GANG SWITCH (FOR MOTION DETECTOR)	⊕	1800
-	SURFACE MOUNTED/ FLOOR STANDING DISTRIBUTION BOARD	⊕	2100 (TOP)
-	RECESSED MOUNTED DISTRIBUTION BOARD	⊕	2100 (TOP)
-	SAME SWITCH SAME CIRCUIT	—	-
-	SEPARATE SWITCH SAME CIRCUIT	---	-

NOTE :

- THIS DRAWING SHALL BE READ IN CONJUNCTION WITH FOLLOWING DRAWINGS:
 C1607/EM/EL/KDU/AS/003
 C1607/EM/EL/KDU/SC/001
 C1607/EM/EL/KDU/SD/006
 C1607/EM/EL/KDU/PO/003
 C1607/EM/EL/KDU/MP/003
 C1607/EM/EL/KDU/CT/003
- POWER SOCKETS FOR ICT REQUIREMENT TO BE INCORPORATED.

GUIDE FOR DB NUMBERING

TYPE	LOCATION	SYSTEM	FLOOR	PANEL NUMBER
MDB	FOH	MP	GF	01
SMDB	BOH	IT	1F	02
FDB	BOH	EL	2F	03
DB	AU	LP	etc.	etc.
-	-	etc.	-	-

- ABBREVIATION FOR DB NAMING GUIDE**
- MDB - MAIN DISTRIBUTION BOARD
 - DB - DISTRIBUTION BOARD
 - SMDB - SUB MAIN DISTRIBUTION PANEL
 - FDB - FLOOR DISTRIBUTION PANEL
 - FOH - FRONT OF HOUSE
 - BOH - BACK OF HOUSE
 - GF - GROUND FLOOR
 - 1F - FIRST FLOOR
 - MP - MECHANICAL POWER
 - IT - ELV
 - EL - ELECTRICAL
 - LP - LIGHT & POWER

Rev	Date	Desd.	Description	Drawn	Chk'd	App'd

Client: DEMOCRATIC SOCIALIST REPUBLIC OF SRI LANKA
 MINISTRY OF HEALTH

Project: DESIGN, CONSULTANCY & SUPERVISION ON REMAINING CONSTRUCTION WORKS OF AUDITORIUM, KDU

Drawing Title: LIGHTING LAYOUT - SECOND FLOOR (+8.050)

ceceb CENTRAL ENGINEERING CONSULTANCY BUREAU

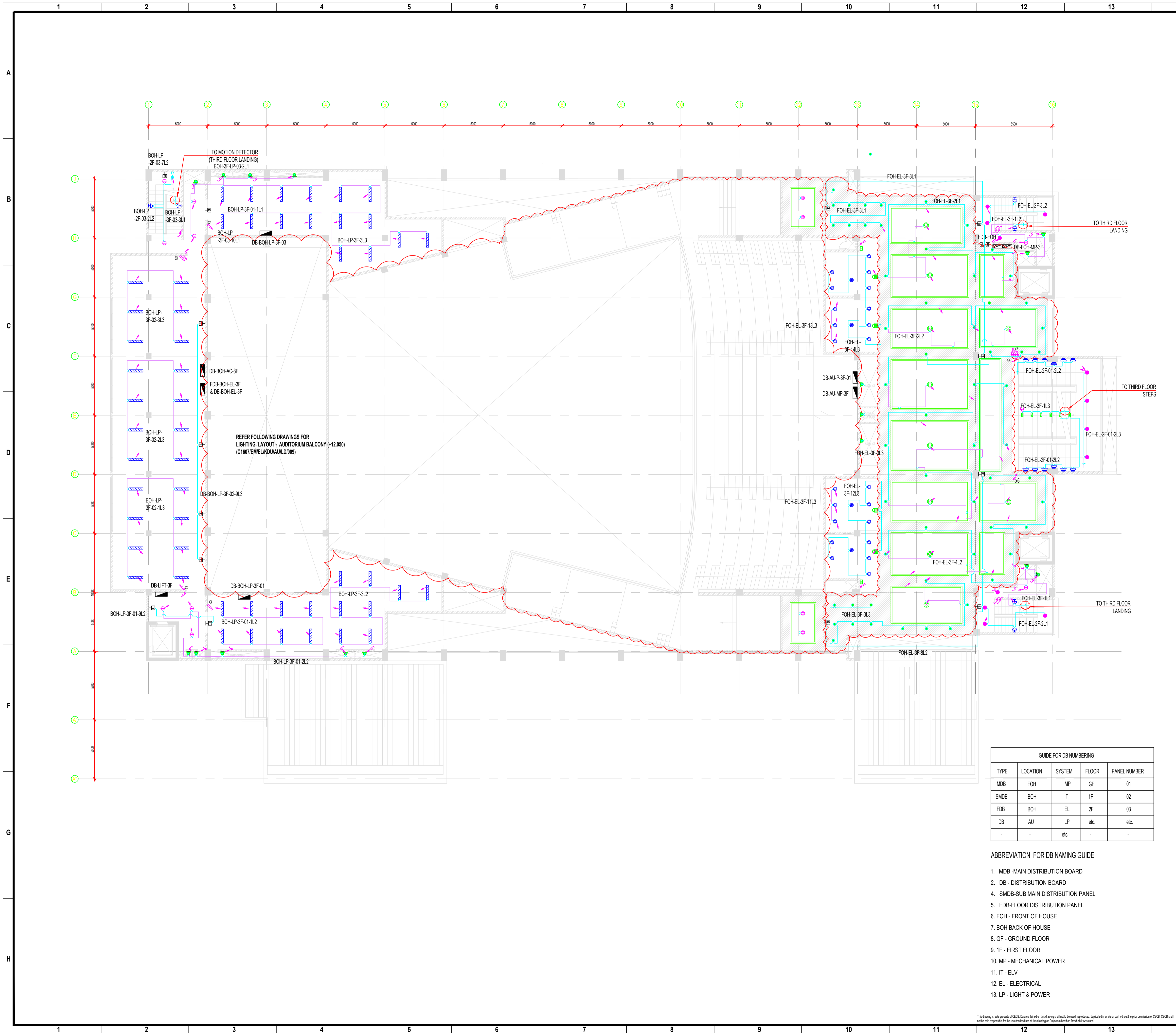
Head Office, 415, Bauddhaloka Mawatha, Colombo 07.
 TEL : 011 2668 800 FAX : 011 2687 369

Project Office, UNIT - Electrical
 TEL : 0094-11-2668806 FAX : 0094-11-2668951 Email : agmenm@ceceb.lk

Designed	K.K.H.S.	Recommended
Checked	N.P.J.S.	Approved	A-PM(ELECTRICAL)
Drawn	P.K.L.S.		A-AGM (ELECTRICAL)
Checked/Submitted		Scale: NTS	Date: 25-11-2021 Status: T

Sheet Size: A1 Drawing No.: C1607/EM/EL/KDU/LD/003 Rev. No.: -

This drawing is the property of CECEB. Data contained on this drawing shall not be used, reproduced, applied in whole or part without the prior permission of CECEB. CECEB shall not be held responsible for the unauthorised use of this drawing on Projects other than for which it was used.



REFER FOLLOWING DRAWINGS FOR LIGHTING LAYOUT - AUDITORIUM BALCONY (+12.050) (C1607/EM/EL/KDU/AU/LD/009)

GUIDE FOR DB NUMBERING				
TYPE	LOCATION	SYSTEM	FLOOR	PANEL NUMBER
MDB	FOH	MP	GF	01
SMDB	BOH	IT	1F	02
FDB	BOH	EL	2F	03
DB	AU	LP	etc.	etc.
-	-	etc.	-	-

- ABBREVIATION FOR DB NAMING GUIDE**
- MDB - MAIN DISTRIBUTION BOARD
 - DB - DISTRIBUTION BOARD
 - SMDB - SUB MAIN DISTRIBUTION BOARD
 - FDB - FLOOR DISTRIBUTION BOARD
 - FOH - FRONT OF HOUSE
 - BOH - BACK OF HOUSE
 - GF - GROUND FLOOR
 - 1F - FIRST FLOOR
 - MP - MECHANICAL POWER
 - IT - IT
 - EL - ELECTRICAL
 - LP - LIGHT & POWER

LEGEND :

BOQ ITEM	DESCRIPTION	SYMBOL	HEIGHT TO BOTTOM FROM FFL (mm)
1.01	900mm RECESSED MOUNTED LED DOWN LIGHT	⊕	RECESSED
1.02	1200mm RECESSED MOUNTED LED DOWN LIGHT	⊙	RECESSED
1.03	1200mm DIMMABLE RECESSED LED DOWN LIGHT (REFER NOTE 3.0)	⊕	RECESSED
1.05	500mm SPOT LIGHT	●	SOFIT
1.08	1200mm SURFACE MOUNTED LED DOWN LIGHT	⊖	SOFIT
1.09	1100mm SURFACE MOUNTED CYLINDRICAL LIGHT	⊖	SOFIT
1.10	LAMP REPLACABLE SINGLE BATTEN (1200mm) LIGHT FITTING	▬	2800
1.14	WALL MOUNTED LIGHT (STAIRCASE)	⊕	2300
1.16	LAMP REPLACABLE TYPE LED DUCT MOUNTED LIGHT	⊖	2100
1.18	WALL RECESSED STEP LIGHT	⊖	150
1.19	STAIRCASE STEP LIGHT	⊖	TO BE FINALIZED AT SITE
1.20	700mm LED STRIP LIGHT	▬	SOFIT
1.21	EMERGENCY LIGHT	⊕	2300
1.25	MOTION DETECTOR	⊕	TO BE FINALIZED AT SITE
1.26	PRESENCE DETECTOR	⊕	TO BE FINALIZED AT SITE
-	DIPOLE SWITCH (FOR PRESENCE DETECTOR)	⊕	1400
-	1 WAY 1 GANG SWITCH	⊕	1400
-	1 WAY 2 GANG SWITCH	⊕	1400
-	1 WAY 3 GANG SWITCH	⊕	1400
-	1 WAY 4 GANG SWITCH	⊕	1400
-	1 WAY 5 GANG SWITCH	⊕	1400
-	2 WAY 1 GANG SWITCH	⊕	1400
-	2 WAY 2 GANG SWITCH	⊕	1400
-	2 WAY 1 GANG SWITCH (FOR MOTION DETECTOR)	⊕	1800
-	SURFACE MOUNTED/ FLOOR STANDING DISTRIBUTION BOARD	⊕	2100 (TOP)
-	RECESSED MOUNTED DISTRIBUTION BOARD	⊕	2100 (TOP)
-	SAME SWITCH SAME CIRCUIT	⊕	-
-	SEPARATE SWITCH SAME CIRCUIT	⊕	-

NOTE :

- THIS DRAWING SHALL BE READ IN CONJUNCTION WITH FOLLOWING DRAWINGS:
 C1607/EM/EL/KDU/AS/004
 C1607/EM/EL/KDU/SC/001
 C1607/EM/EL/KDU/SD/007
 C1607/EM/EL/KDU/PO/004
 C1607/EM/EL/KDU/MP/004
 C1607/EM/EL/KDU/CT/004
- THE PRESENCE DETECTORS ARE CONNECTED IN SERIES WITH THE DIPOLE SWITCH AND PARALLEL WITH THE LIGHT FIXTURES.

Rev	Date	Desd.	Description	Drwn.	CHK'd	App'd

Client: DEMOCRATIC SOCIALIST REPUBLIC OF SRI LANKA
MINISTRY OF HEALTH

Project: DESIGN, CONSULTANCY & SUPERVISION ON REMAINING CONSTRUCTION WORKS OF AUDITORIUM, KDU

Drawing Title: LIGHTING LAYOUT - THIRD FLOOR (+12.050)

cecb CENTRAL ENGINEERING CONSULTANCY BUREAU

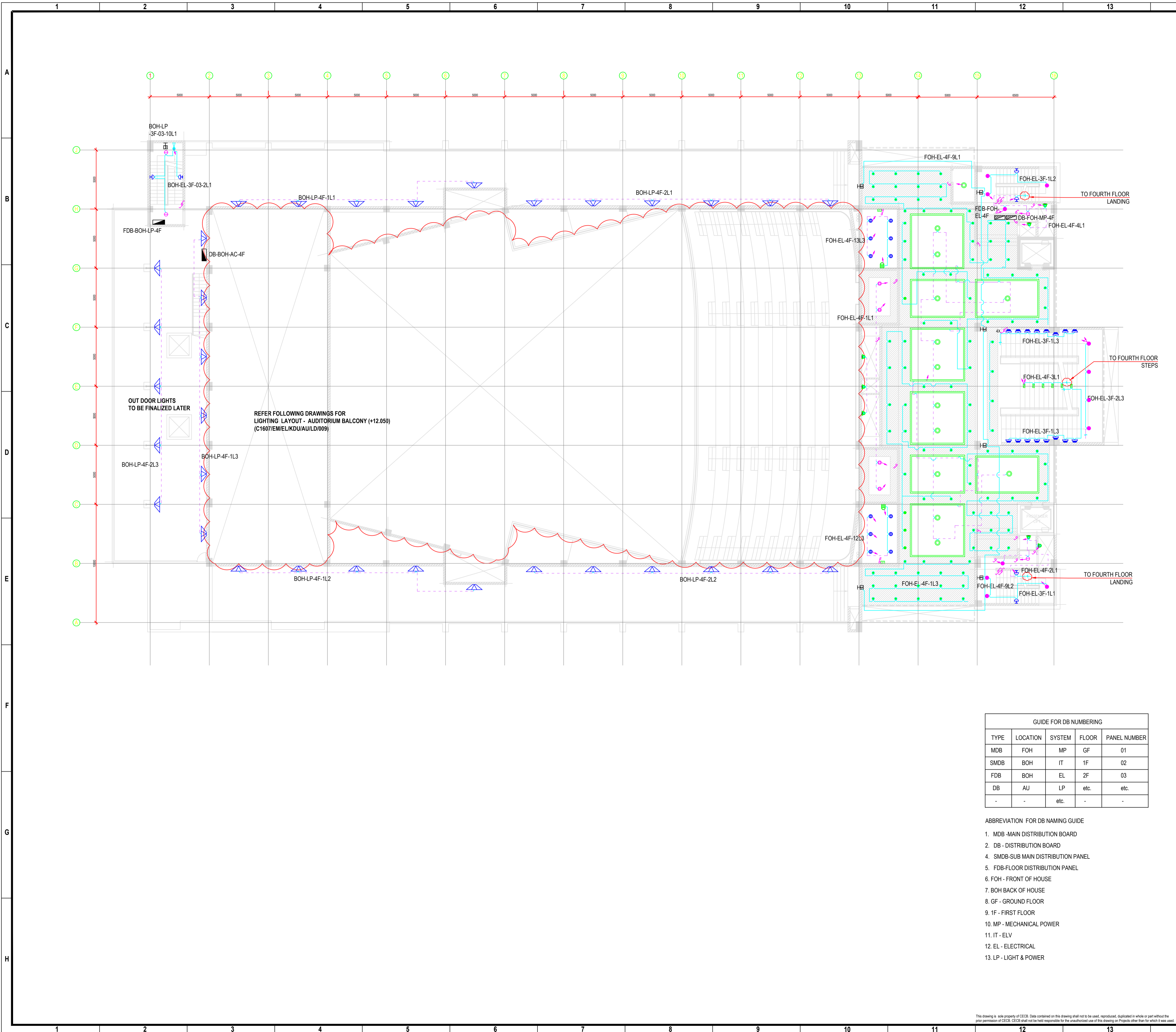
Head Office, 415, Sandakshoka Mawatha, Colombo 07.
 TEL : 011 2668 800 FAX : 011 2668 951 Email : agnerm@cecb.lk

Project Office, UNIT - Electrical
 TEL : 0094-11-2668806 FAX : 0094-11-2668951 Email : agnerm@cecb.lk

Designed	K.K.H.S.	Recommended	A-PM(ELECTRICAL)
Checked	N.P.J.S.	Approved	A-AGM(ELECTRICAL)
Drawn	P.K.L.S.	Scale: NTS	Date: 25-11-2021 Status: T
Checked/Submitted		BASE/ELECTRICAL/UN/ELECTRICAL DRAWINGS	

Sheet Size: A1 Drawing No: C1607/EM/EL/KDU/LD/004 Rev. No. -

This drawing is the property of CECB. Data contained on this drawing shall not be used, reproduced, duplicated in whole or part without the prior permission of CECB. CECB shall not be held responsible for the consequences of any errors or omissions in this drawing or those arising therefrom for which it shall not be held liable.



LEGEND :

BOQ ITEM	DESCRIPTION	SYMBOL	HEIGHT TO BOTTOM FROM FFL (mm)
1.01	900mm RECESSED MOUNTED LED DOWN LIGHT	⊙	RECESSED
1.02	1200mm RECESSED MOUNTED LED DOWN LIGHT	⊙	RECESSED
1.03	1200mm DIMMABLE RECESSED LED DOWN LIGHT (REFER NOTE 3.0)	⊙	RECESSED
1.05	500mm SPOT LIGHT	●	SOFIT
1.08	1200mm SURFACE MOUNTED LED DOWN LIGHT	⊕	SOFIT
1.14	WALL MOUNTED LIGHT (STAIRCASE)	⊕	2300
1.16	LAMP REPLACEABLE TYPE LED DUCT MOUNTED LIGHT	⊕	2100
1.18	WALL RECESSED STEP LIGHT	⊕	150
1.19	STAIRCASE STEP LIGHT	⊕	TO BE FINALIZED AT SITE
1.20	700mm LED STRIP LIGHT	—	SOFIT
1.21	EMERGENCY LIGHT	⊕	2300
1.25	MOTION DETECTOR	⊕	TO BE FINALIZED AT SITE
1.26	PRESENCE DETECTOR	⊕	TO BE FINALIZED AT SITE
-	DIPOLE SWITCH (FOR PRESENCE DETECTOR)	⊕	1400
-	1 WAY 1 GANG SWITCH	⊕	1400
-	1 WAY 2 GANG SWITCH	⊕	1400
-	1 WAY 3 GANG SWITCH	⊕	1400
-	1 WAY 4 GANG SWITCH	⊕	1400
-	1 WAY 5 GANG SWITCH	⊕	1400
-	2 WAY 1 GANG SWITCH	⊕	1400
-	2 WAY 2 GANG SWITCH	⊕	1400
-	2 WAY 1 GANG SWITCH (FOR MOTION DETECTOR)	⊕	1800
-	SURFACE MOUNTED FLOOR STANDING DISTRIBUTION BOARD	⊕	2100 (TOP)
-	RECESSED MOUNTED DISTRIBUTION BOARD	⊕	2100 (TOP)
-	SAME SWITCH SAME CIRCUIT	—	-
-	SEPARATE SWITCH SAME CIRCUIT	—	-

NOTE :

1. THIS DRAWING SHALL BE READ IN CONJUNCTION WITH FOLLOWING DRAWINGS.

C1607/EM/EL/KDU/AS/005
 C1607/EM/EL/KDU/SC/001
 C1607/EM/EL/KDU/SD/008
 C1607/EM/EL/KDU/PO/005
 C1607/EM/EL/KDU/MP/005
 C1607/EM/EL/KDU/CT/005

GUIDE FOR DB NUMBERING

TYPE	LOCATION	SYSTEM	FLOOR	PANEL NUMBER
MDB	FOH	MP	GF	01
SMDB	BOH	IT	1F	02
FDB	BOH	EL	2F	03
DB	AU	LP	etc.	etc.
-	-	etc.	-	-

- ABBREVIATION FOR DB NAMING GUIDE**
- MDB - MAIN DISTRIBUTION BOARD
 - DB - DISTRIBUTION BOARD
 - SMDB - SUB MAIN DISTRIBUTION BOARD
 - FDB - FLOOR DISTRIBUTION BOARD
 - FOH - FRONT OF HOUSE
 - BOH - BACK OF HOUSE
 - GF - GROUND FLOOR
 - 1F - FIRST FLOOR
 - MP - MECHANICAL POWER
 - IT - ELV
 - EL - ELECTRICAL
 - LP - LIGHT & POWER

Rev	Date	Desd.	Description	Drawn	Chk'd	App'd

Client: DEMOCRATIC SOCIALIST REPUBLIC OF SRI LANKA
 MINISTRY OF HEALTH

Project: DESIGN, CONSULTANCY & SUPERVISION ON REMAINING CONSTRUCTION WORKS OF AUDITORIUM, KDU

Drawing Title: LIGHTING LAYOUT - FOURTH FLOOR (+16.675)

cecb CENTRAL ENGINEERING CONSULTANCY BUREAU

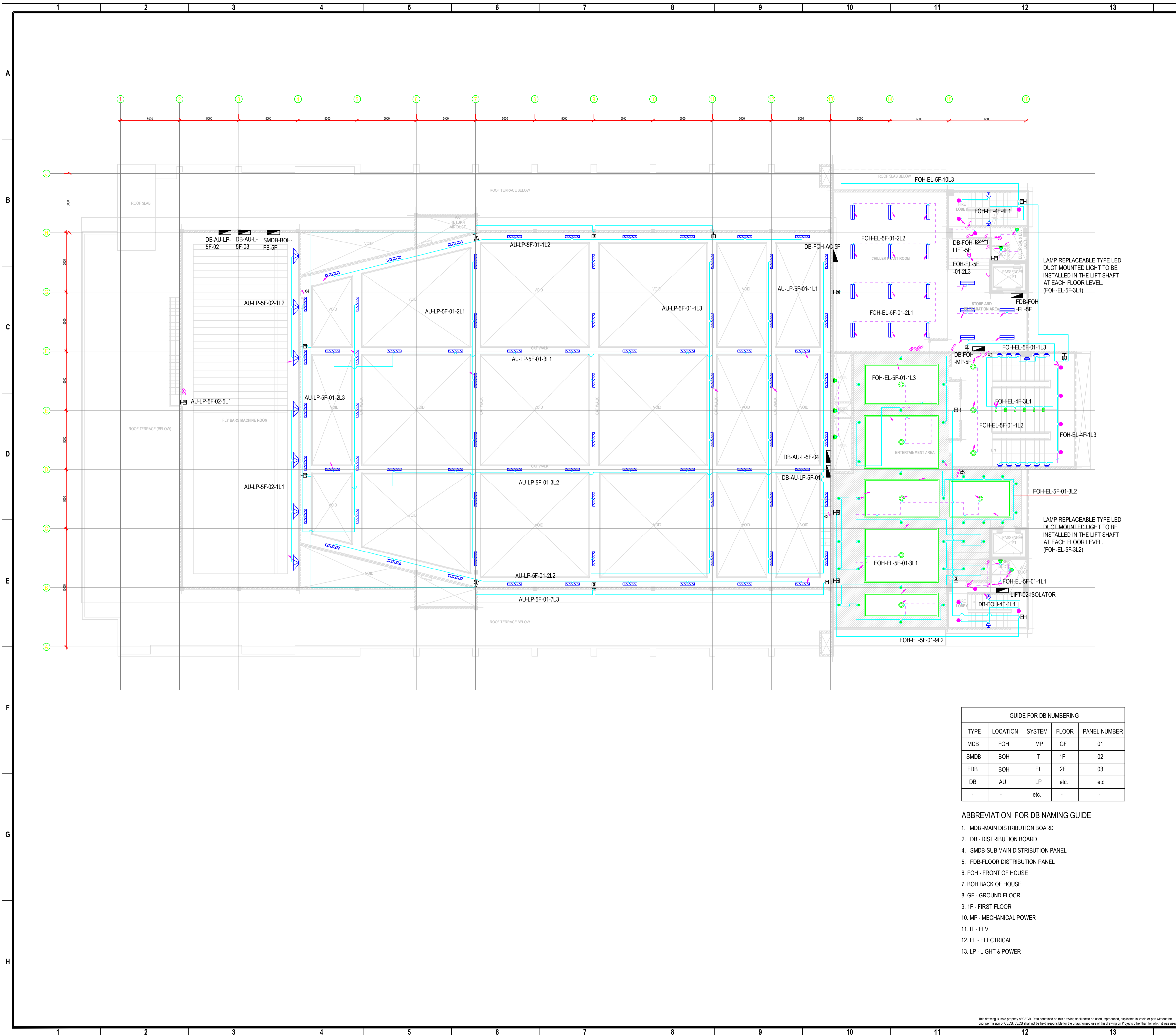
Head Office, 415, Basudimalaka Mawatha, Colombo 07.
 TEL : 011 2668 800
 FAX : 011 2687 369

Project Office, UNIT - Electrical
 TEL : 0094-11-2668806
 FAX : 0094-11-2668951
 Email : agnennm@cecb.lk

Designed	K.K.H.S.	Recommended	A-PM(ELECTRICAL)
Checked	N.P.J.S.	Approved	A-AGM (ELECTRICAL)
Drawn	P.K.L.S.	Scale: NTS	Date: 25-11-2021 Status: T
Checked/Submitted		BASE ELECTRICAL UNITELECTRICAL DRAWINGS	

Sheet Size: A1 Drawing No.: C1607/EM/EL/KDU/LD/005 Rev. No.: -

This drawing is sole property of CECB. Data contained on this drawing shall not be used, reproduced, applied in whole or part without the prior permission of CECB. CECB shall not be held responsible for the unauthorized use of this drawing or Project's other than for which it was used.



LEGEND :

BOQ ITEM	DESCRIPTION	SYMBOL	HEIGHT TO BOTTOM FROM FFL (mm)
1.02	1200mm RECESSED MOUNTED LED DOWN LIGHT	☉	RECESSED
1.05	500mm SPOT LIGHT	●	SOFIT
1.08	1200mm SURFACE MOUNTED LED DOWN LIGHT	⊕	SOFIT
1.09	1100mm SURFACE MOUNTED CYLINDRICAL LIGHT	●	SOFIT
1.11	LAMP REPLACEABLE DOUBLE BATTEN (1200mm) LIGHT FITTING	▬	2800
1.14	WALL MOUNTED LIGHT (STAIRCASE)	⌋	2300
1.16	LAMP REPLACEABLE TYPE LED DUCT MOUNTED LIGHT	⊖	2100
1.18	WALL RECESSED STEP LIGHT	⌋	150
1.19	STAIRCASE STEP LIGHT	⊖	TO BE FINALIZED AT SITE
1.20	700mm LED STRIP LIGHT	▬	SOFIT
1.21	EMERGENCY LIGHT	⊕	2300
1.22	LED FLOOD LIGHT (IP 54)	⊖	-
-	LAMP REPLACEABLE SINGLE BATTEN (1200mm) LIGHT FITTING	▬	-
-	LIGHTING CONTROL UNIT	⊖	1400
-	1 WAY 1 GANG SWITCH	⌋	1400
-	1 WAY 2 GANG SWITCH	⌋	1400
-	1 WAY 3 GANG SWITCH	⌋	1400
-	1 WAY 4 GANG SWITCH	⌋	1400
-	1 WAY 5 GANG SWITCH	⌋	1400
-	2 WAY 1 GANG SWITCH	⌋	1400
-	2 WAY 2 GANG SWITCH	⌋	1400
-	2 WAY 1 GANG SWITCH (FOR MOTION DETECTOR)	⌋	1800
-	SURFACE MOUNTED/ FLOOR STANDING DISTRIBUTION BOARD	⊖	2100 (TOP)
-	RECESSED MOUNTED DISTRIBUTION BOARD	⊖	2100 (TOP)
-	SAME SWITCH SAME CIRCUIT	⌋	-
-	SEPARATE SWITCH SAME CIRCUIT	⌋	-

NOTE :

- THIS DRAWING SHALL BE READ IN CONJUNCTION WITH FOLLOWING DRAWINGS.
 C1607/EM/EL/KDU/AS/006
 C1607/EM/EL/KDU/SC/001
 C1607/EM/EL/KDU/SD/009
 C1607/EM/EL/KDU/PO/006
 C1607/EM/EL/KDU/MP/006
 C1607/EM/EL/KDU/CT/006
- TO BE CONTROLLED BY STANDALONE DIMMER CONTROL PANEL.
- LAMP REPLACEABLE TYPE LED DUCT MOUNTED LIGHT TO BE INSTALLED IN THE LIFT SHAFT AT EACH FLOOR LEVEL. (FOH-EL-SF-5L3)

GUIDE FOR DB NUMBERING

TYPE	LOCATION	SYSTEM	FLOOR	PANEL NUMBER
MDB	FOH	MP	GF	01
SMDB	BOH	IT	1F	02
FDB	BOH	EL	2F	03
DB	AU	LP	etc.	etc.
-	-	etc.	-	-

- ABBREVIATION FOR DB NAMING GUIDE**
- MDB - MAIN DISTRIBUTION BOARD
 - DB - DISTRIBUTION BOARD
 - SMDB - SUB MAIN DISTRIBUTION PANEL
 - FDB - FLOOR DISTRIBUTION PANEL
 - FOH - FRONT OF HOUSE
 - BOH - BACK OF HOUSE
 - GF - GROUND FLOOR
 - 1F - FIRST FLOOR
 - MP - MECHANICAL POWER
 - IT - ELV
 - EL - ELECTRICAL
 - LP - LIGHT & POWER

Rev	Date	Desd.	Description	Drwn.	Chkd	App'd

Client: DEMOCRATIC SOCIALIST REPUBLIC OF SRI LANKA
MINISTRY OF HEALTH

Project: DESIGN, CONSULTANCY & SUPERVISION ON REMAINING CONSTRUCTION WORKS OF AUDITORIUM, KDU

Drawing Title: LIGHTING LAYOUT - FIFTH FLOOR (+20.675)

cecb CENTRAL ENGINEERING CONSULTANCY BUREAU

Head Office, 415, Sbandathakka Mawatha, Colombo 07.
TEL : 011 2668 800
FAX : 011 2687 369

Project Office, UNIT - Electrical
TEL : 0094-11-2668806
FAX : 0094-11-2668951
Email : agmenm@cecb.lk

Designed	K.K.H.S.	Recommended	A-PM(ELECTRICAL)
Checked	N.P.J.S.	Approved	A-AGM(ELECTRICAL)
Drawn	P.K.L.S.	Scale: NTS	Date: 25-11-2021
Checked		Status	T
Submitted		BASE/ELECTRICAL/INT/ELECTRICAL DRAWINGS	

Sheet Size: A1 Drawing No.: C1607/EM/EL/KDU/LD/006 Rev. No.: -

This drawing is sole property of CECB. Data contained on this drawing shall not be used, reproduced, duplicated in whole or part without the prior permission of CECB. CECB shall not be held responsible for the unauthorized use of this drawing on Projects other than for which it was used.