

MODEL PAPER

Date of Examinations



No. of Questions	25
No. of Pages	00

GENERAL SIR JOHN KOTELAWALA DEFENCE UNIVERSITY
SELECTION TEST FOR THE ENROLLMENT OF DAY SCHOLARS – INTAKE 39
BET (HONS) IN CONSTRUCTION TECHNOLOGY
BET (HONS) IN BUILDING SERVICES TECHNOLOGY
BET (HONS) IN BIOMEDICAL INSTRUMENTATION TECHNOLOGY
SUBJECT RELATED KNOWLEDGE

Instructions:

Duration: 20 minutes

Answer all questions

Mark the correct answers on MCQ answer sheet, which is provided

- Find the coordinates of the point of intersection of the lines with equations $2x-y=4$ and $3x+2y=-1$
 - (-1, -2)
 - (1, -2)
 - (1,2)
 - (-2,1)
- Use the quadratic formula $x = \frac{-b \pm \sqrt{b^2 - 4ac}}{2a}$ to solve the equation $2x^2 - 3x - 4 = 0$.
 - $\frac{3 \pm \sqrt{41}}{4}$
 - $\frac{3 \pm \sqrt{14}}{4}$
 - $\frac{3 \pm \sqrt{31}}{4}$
 - $\frac{3 \pm \sqrt{13}}{4}$
- A force of 15 N is applied to a stationary object which has a mass of 6.0 kg. Calculate the acceleration of the object.
 - 2.5 m/s²
 - 25 m/s²
 - 0.25 cm/s²
 - 25cm/s²
- A vector quantity has:
 - Magnitude only
 - Both magnitude and direction
 - Direction only
 - No magnitude and direction

MODEL PAPER

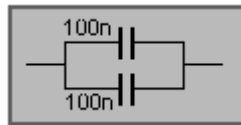
5. The length of the longest survey line which was used in a chain surveying procedure was 100m. The most suitable scale to be used to draw the plan using the measurement of the above survey on a A4 sized paper (210 mm X 297 mm) is:

(a) 1: 100 (b) 1:250 (c) 1:500 (d) 1:1000

6. Which one of the following motions is not considered as a primary motion?

- i. Three dimensional
- ii. Rotational
- iii. Linear
- iv. Oscillatory

7. The value of the combination is



- a. 100n
- b. 200n
- c. 50n
- d. 0

8. What is the part common to both the human digestive system and the respiratory system?

- a. Mouth
- b. Oesophagus
- c. Pharynx
- d. Larynx

9. 1mA is equal to

- a. 0.001A
- b. 0.00001A
- c. 0.01A
- d. 0.1A

10. Which of the following memory is non-volatile?

- a. SRAM
- b. DRAM
- c. ROM
- d. All the above

THERE WILL BE 25 QUESTIONS IN THE ACTUAL EXAM PAPER