

<b>Date of Examination</b>



<b>No of Questions</b>	
<b>No. of Pages</b>	

**GENERAL SIR JOHN KOTELAWALA DEFENCE UNIVERSITY**  
SELECTION TEST FOR THE ENROLLMENT OF DAY SCHOLARS – INTAKE 39  
**Intelligence Quotient**  
(MODEL PAPER)

**Call up No:-** .....

**Duration:**

**NIC No:-** .....

**General Instructions:**

Answer ***all questions.***

**02** mark for each correct answer (No minus marks)

---

1. If A = 2, B = 5, C = 3 and D = 10, calculate the following:

$$\frac{C \times D - B \times C}{A + C}$$

- a. 1
  - b. 2
  - c. 3
  - d. 5
2. A boy is four years old, and his sister is three times as old as he is. When the boy is 12 years old, how old will his sister be?
- a. 19
  - b. 20
  - c. 21
  - d. 36
3. Cube is related to Square in the same way as Square is related to?
- a. Point
  - b. Triangle
  - c. Plane
  - d. Line
4. What number comes next in this sequence?

25, 32, 27, 36, ?

- a. 45
- b. 27
- c. 35
- d. 26

5. SUNDAY, MONDAY, WEDNESDAY, SATURDAY, WEDNESDAY Which day comes next?

- a. SATURDAY
- b. MONDAY
- c. SUNDAY
- d. TUESDAY

6. The average of three numbers is 26. The average of two of these numbers is 34. What is the third number?

- a. 68
- b. 78
- c. 10
- d. 5

7. A film production company must submit 5 of its movies released this year for consideration for an awards ceremony. This year, the company released 14 movies; 8 of these were horror movies and 6 were romantic comedies. If it submits at least 3 romantic comedies, how many groups of 5 movies can be submitted?

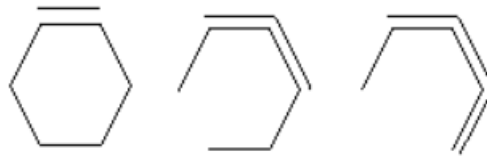
- a. 276
- b. 432
- c. 560
- d. 686

8. If the average of three numbers is  $5a - 2$  and the average of two of the numbers is  $4a + 2b + 1$ , which of the following is the other number in terms of  $a$  and  $b$ ?

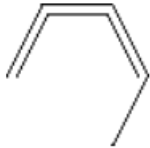
- a.  $a - 2b - 3$
- b.  $5a + 2b + 3$
- c.  $7a - 4b - 8$
- d.  $11a - 2b - 5$

9. David and George had 170 between them; however, George had one and a half times as many as David. How many did each have?
- David 102, George 68
  - David 78, George 102
  - David 68, George 102
  - David 102, George 78

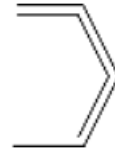
10. What comes next in the following pattern?



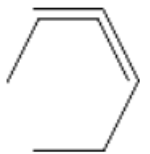
a.



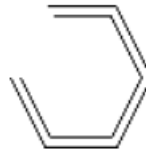
b.



c.



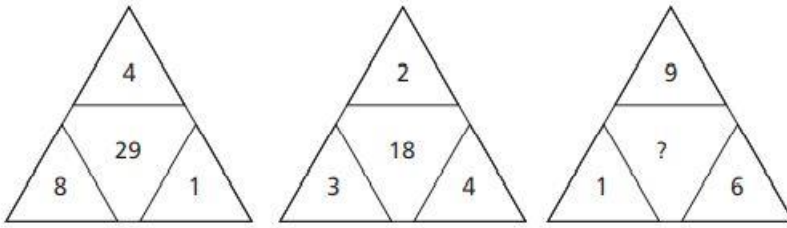
d.



11. If you rearrange the letters of "haret", you would have the name of a:
- Fish
  - River
  - Planet
  - Ventricle

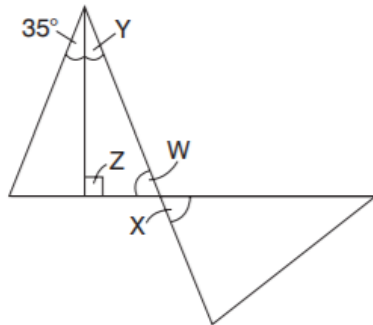
12. A girl is facing west before blindfolded. She is spun 180 degrees to the right, then 630 degrees to the left. In what direction is she now facing?
- North
  - East
  - South
  - West

13. What number should replace the question mark?



- a. 31
- b. 34
- c. 14
- d. 15

14. What is the value of angle X?



- a.  $55^\circ$
- b.  $60^\circ$
- c.  $70^\circ$
- d.  $90^\circ$

15. What number should replace the question mark?

$$926 : 24$$

$$799 : 72$$

$$956 : ?$$

- a. 20
- b. 59
- c. 51
- d. 48

16. A is the brother-in-law of X who has a sister Y. Y's nephew P's father is married to X. How is A related to P?
- Brother-in-law
  - Uncle
  - Brother
  - Nephew
17. In each of the following, identify two words (one from each set of brackets) that form a connection, when paired with the words  
TRAVEL (journey, map, list)  
ATTEND (meeting, programme, boardroom)
- map, meeting
  - list, programme
  - journey, meeting
  - journey, boardroom
18. A jet was detected on the Radar flying 12 Km in 30 seconds, what is the estimated speed per hour?
- 1440 Km/h
  - 1240 Km/h
  - 1340 Km/h
  - 1420 Km/h
19. What should come next in the following number sequence?  
 $\frac{3}{5}, \frac{9}{10}, \frac{17}{13}, \frac{17}{24}, ?$
- $\frac{31}{21}$
  - $\frac{17}{23}$
  - $\frac{26}{27}$
  - $\frac{23}{24}$

20. A grocer ordered 54 items of fruit consisting of grapes, apples and oranges in the ratio of 1 : 3 : 2 respectively. How many of each item did he order?
- a. 27 grapes, 9 apples, 18 oranges
  - b. 9 apples, 18 grapes, 27 oranges
  - c. 18 grapes, 9 oranges, 27 apples
  - d. 9 grapes, 27 apples, 18 oranges

---END OF THE PAPER---

SAMPLE IQ PAPER